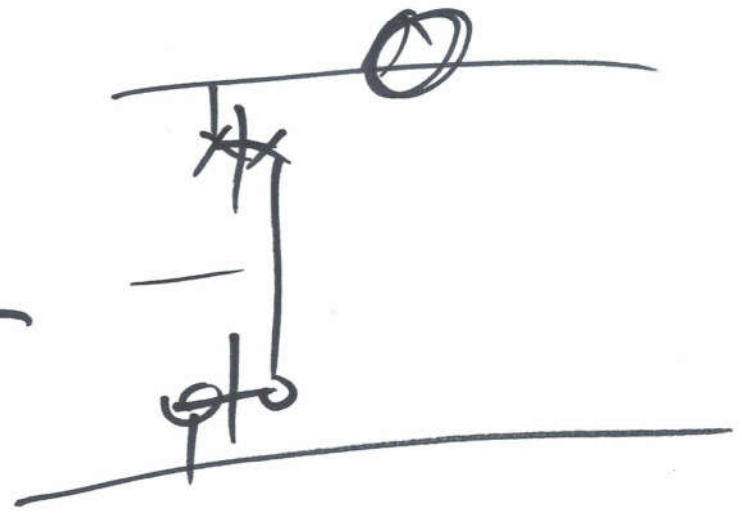
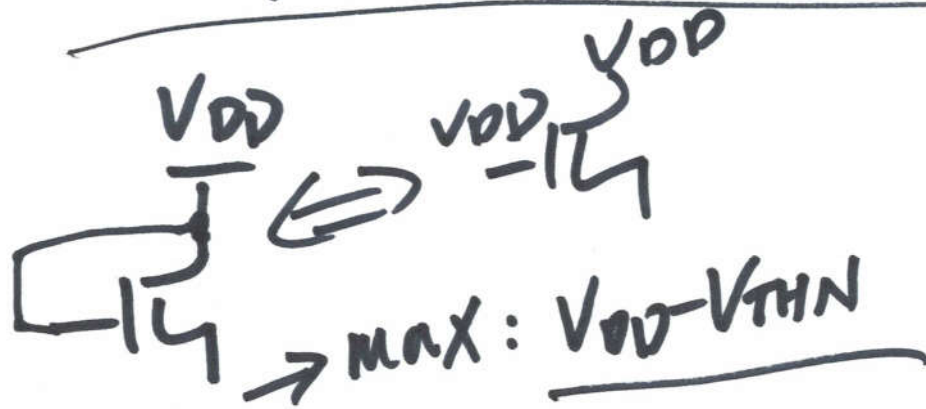
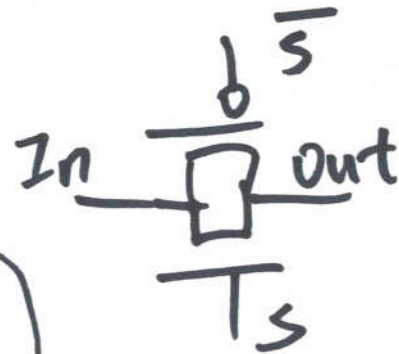
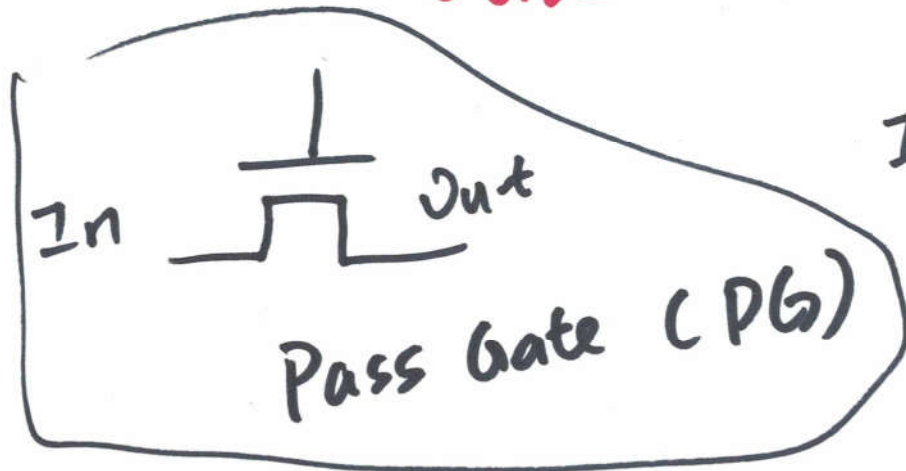


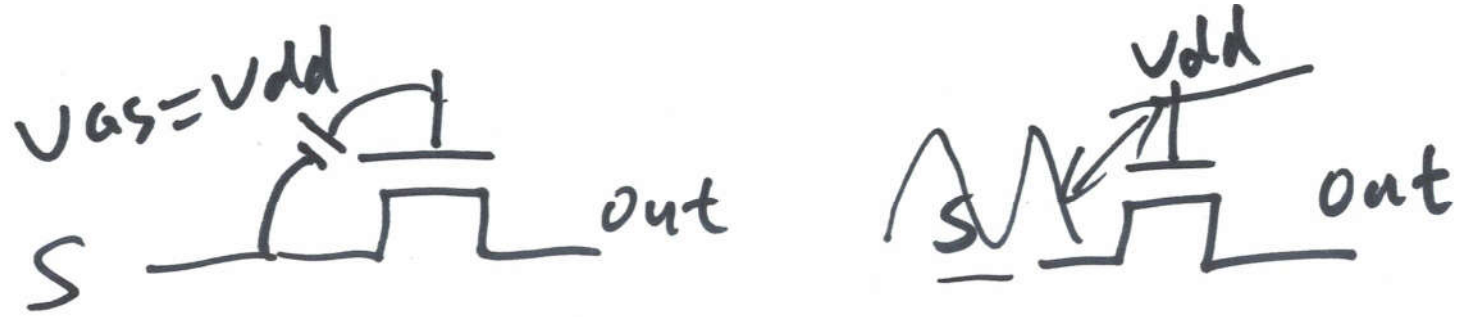
# Abo's s/H circuit



$$V_{GS} = V_{DD} + V_{THN} - V_{DD} = V_{THN}$$



①

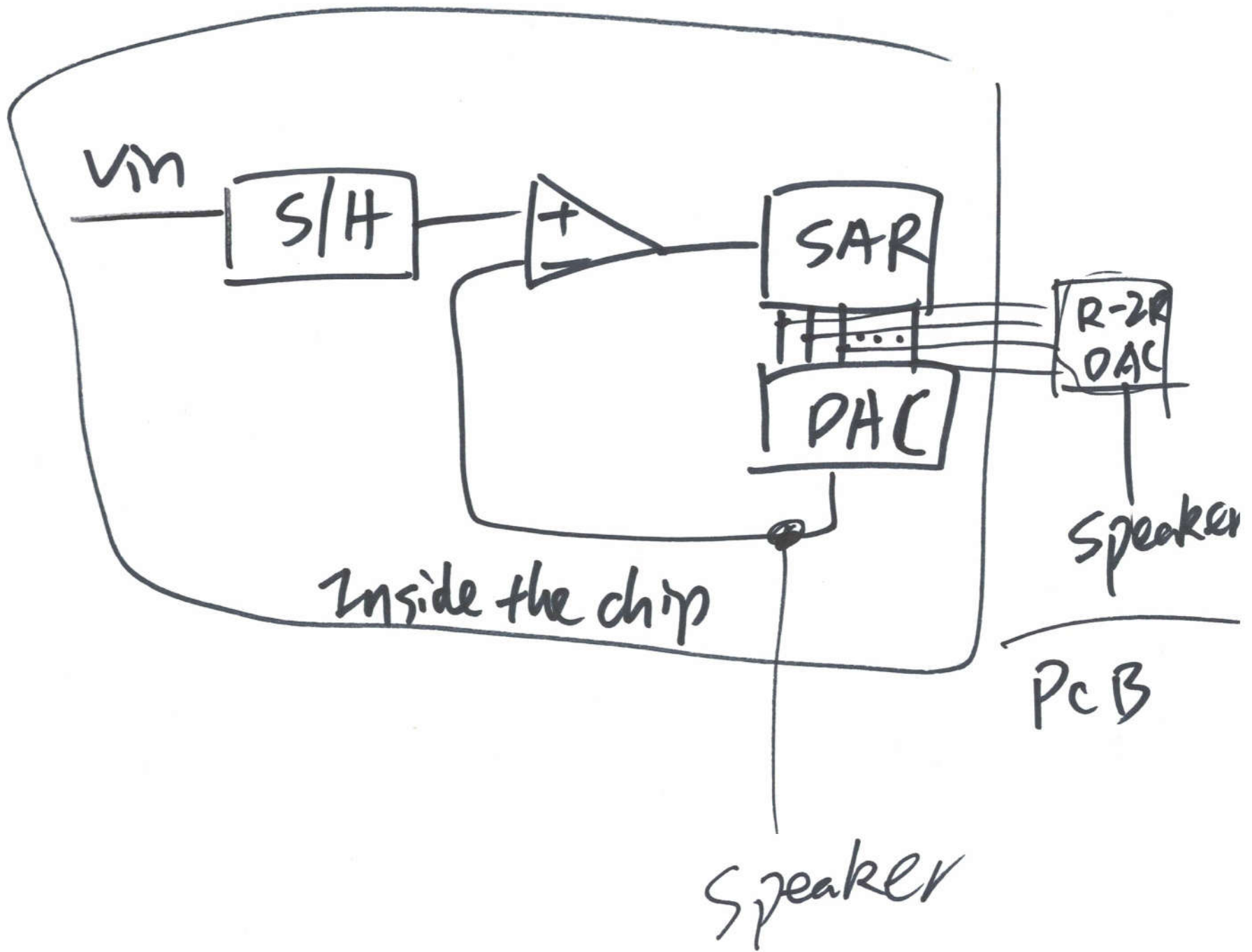


Bootstrapped circuit

For  $M_1$ ,  $V_{GS} = V_G - V_S$

$$\underline{V_{GS}} = V_{DD} + V_S - V_S = V_{DD}$$

②



3