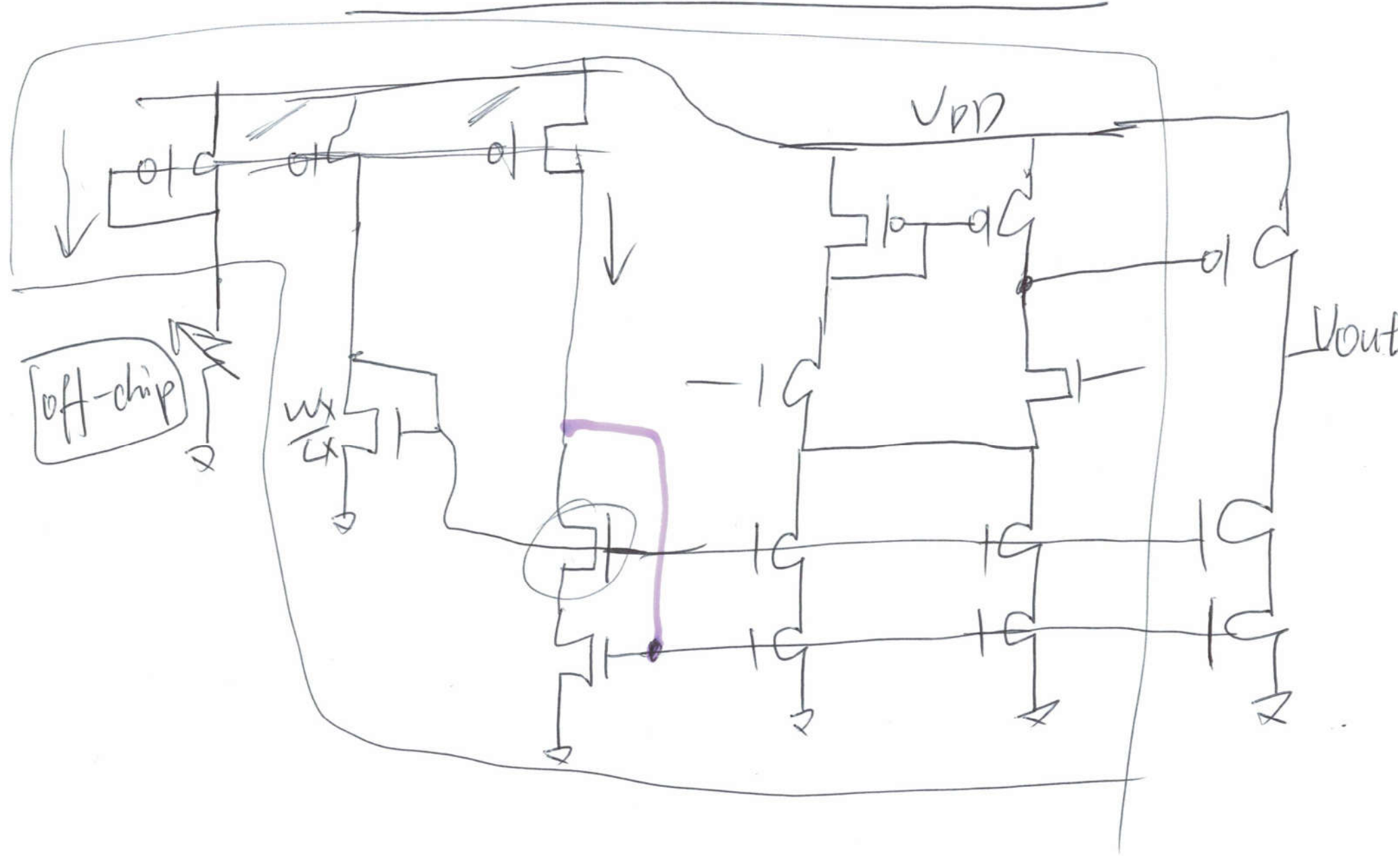
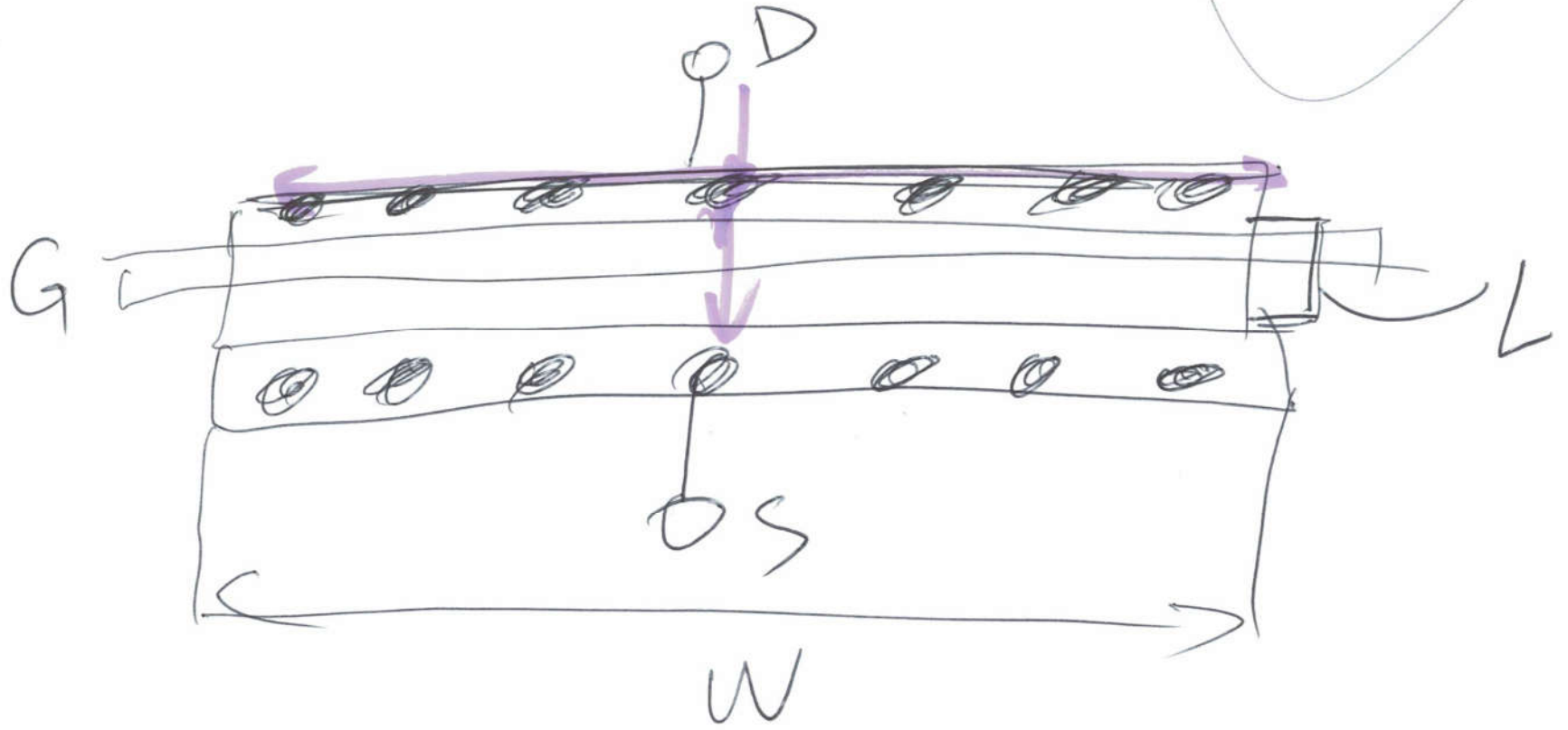
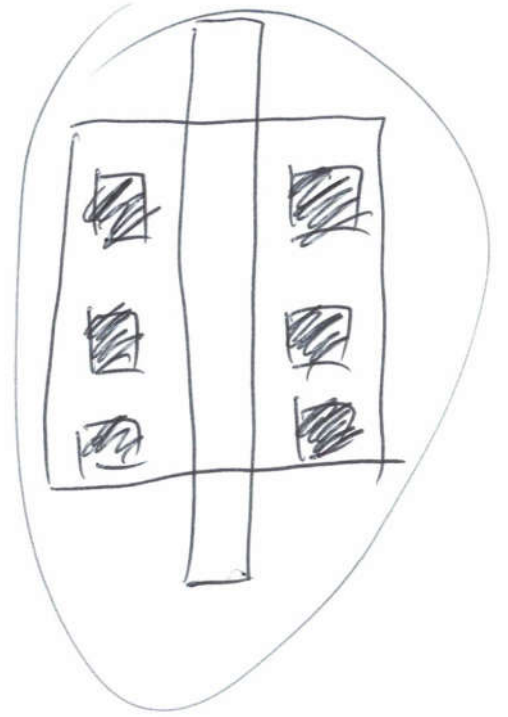
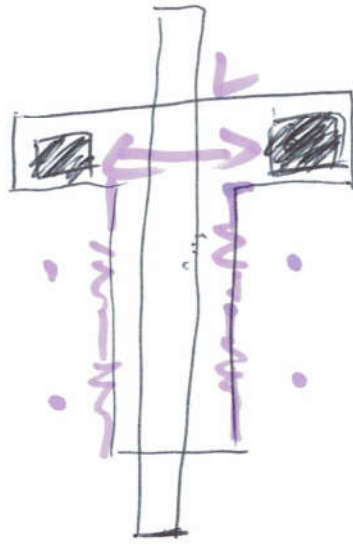
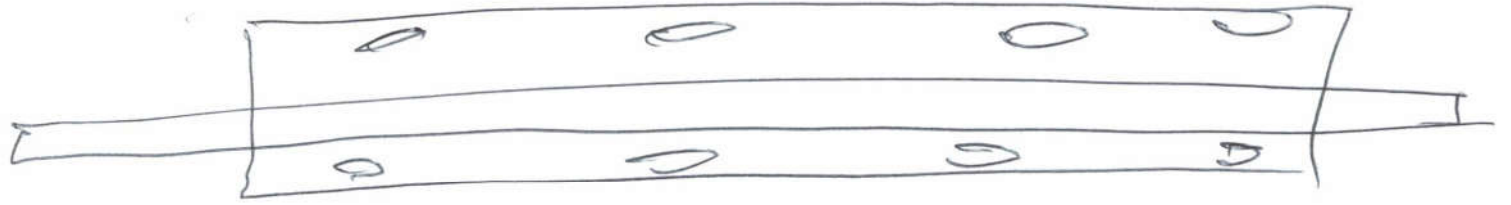
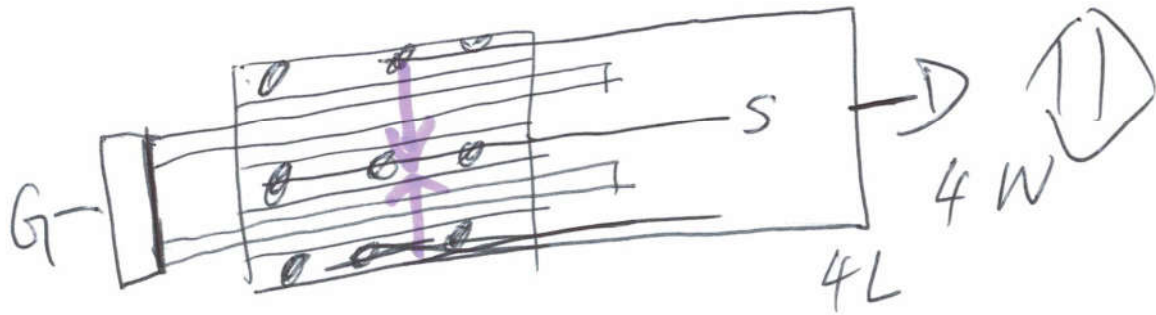
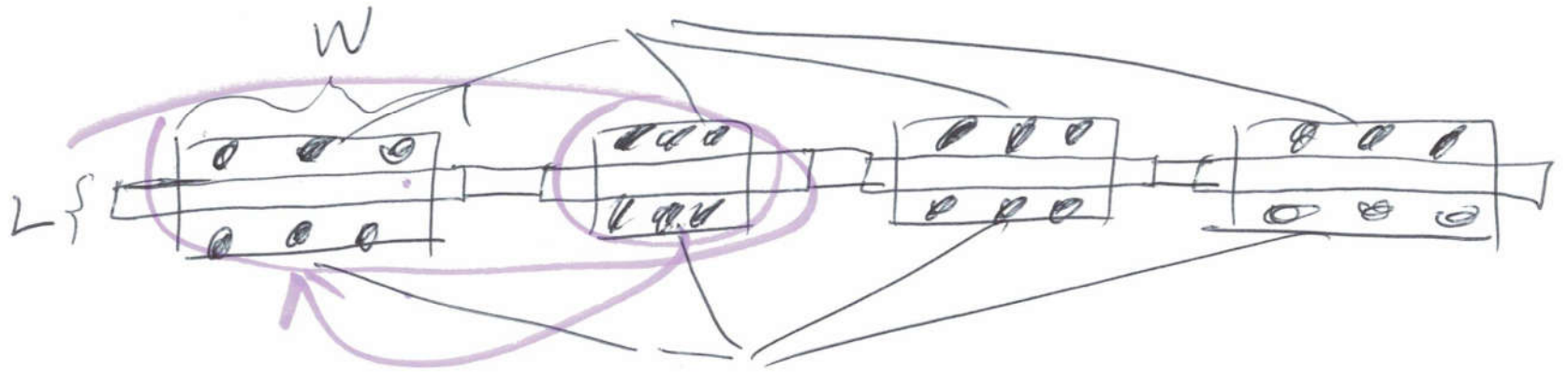


Op_Amp Schematic

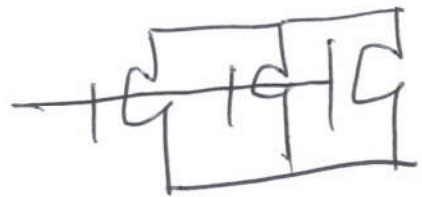
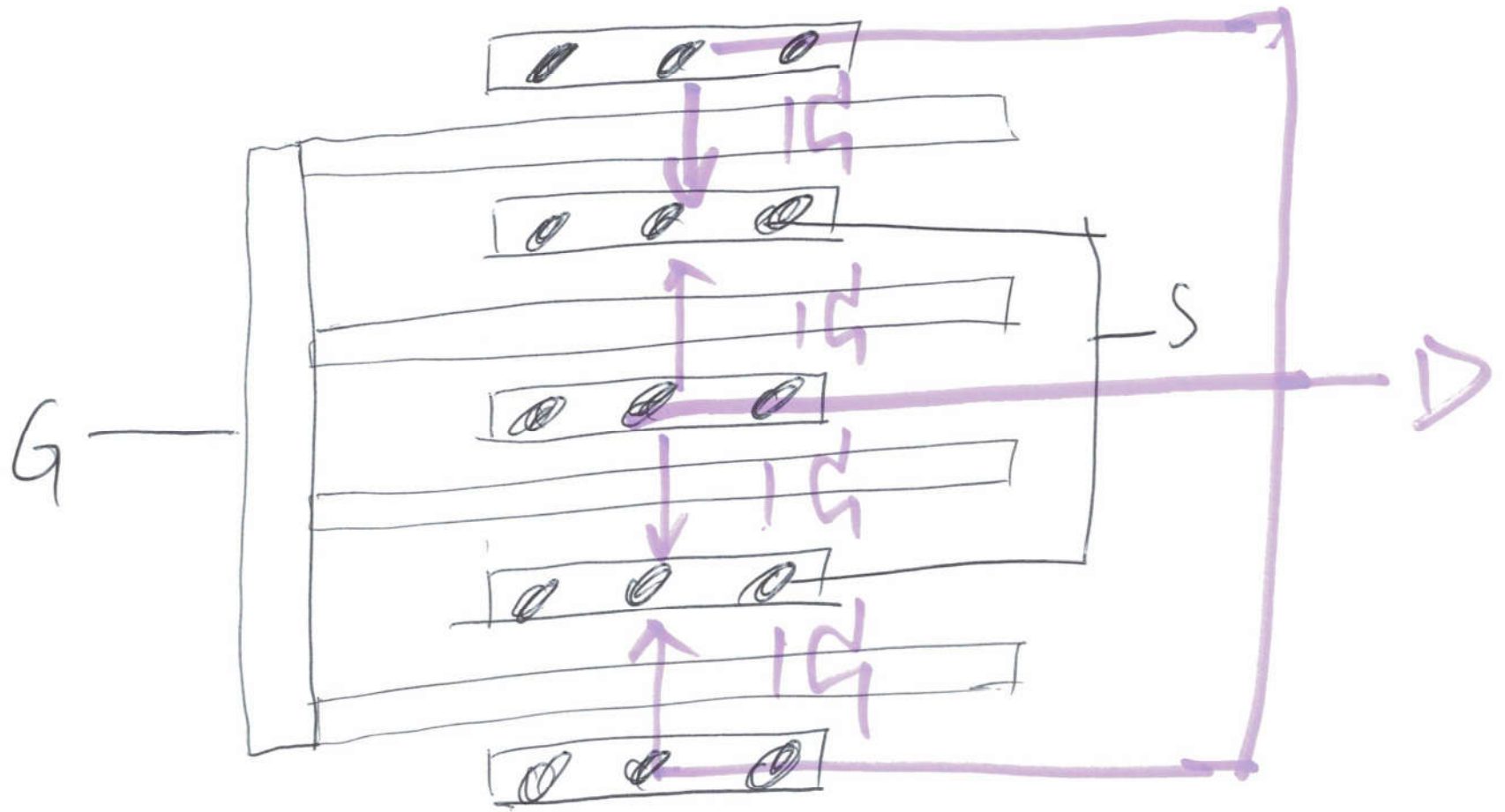


(1)





(3)



4-input-1 NMOS



(4)

CS Process Poly1 - Poly2 Capacitors

CMOS Book P114

$$C_{ox}' = \frac{\epsilon_r \epsilon_0}{t_{ox}}$$
$$C_{ox} = C_{ox}' \cdot A$$

$\epsilon_r = 3.97$ $\epsilon_0 = 8.5 \times 10^{-18} \text{ F}/\mu\text{m}$, $t_{ox} = 3.97 \times 10^{-8} \text{ m}$
SiO₂

$C_{ox} = 10 \text{ pF}$, $A?$

$10 \text{ pF} = C_{ox} = \frac{3.97 \times 8.5 \times 10^{-18} \text{ F}/\mu\text{m}}{3.97 \times 10^{-8} \text{ m}} \cdot A$